

DIRECTOR / PIANO

EPP SONIN

*MM Manhattan School Mus BS
Piano, Mannes College*



Ms. Sonin is a frequent soprano soloist with orchestras and choruses in oratorios, masses and cantatas, locally with the Lexington Symphony and the Boston Landmarks Orchestra. She has given recitals in major cities in the

U.S., Canada, and Europe and has premiered new works at Lincoln Center, MIT, Harvard, Tufts and UMASS-Lowell and performed in numerous Boston-area operas. She is a member of the Cantata Singers. Her performances have been heard on radio and recordings. She was soloist with the Vancouver Symphony and with the Estonian State Symphony in a gala celebrating Estonia's newly re-established independence. Ms. Sonin has taught piano for over 30 years in NY and Boston. In 1985 she founded the Lexington Music School where she continues to offer piano classes and private piano instruction for children.

VOICE

ROBERT HONEYSUCKER

Baritone

MM Miami University



Mr. Honeysucker is a distinguished singer performing as soloist with the BSO, the Boston Pops, Boston Lyric Opera, Lake George Opera, Syracuse Opera, Pittsburgh Symphony/Great Woods, and

abroad in Berlin, New Zealand and Japan. The recipient of numerous awards, he is featured on several CDs and is heard on radio. He teaches at the Longy School of Music and Boston Conservatory.

DIANA COLE

Mezzo-Soprano

MM NEC



Ms. Cole has been a Member of the National Association of Teachers of Singing. Successful Voice studios in Arlington & Lexington for over 25 years. Co-founder of Vocal Arts Collaborative. Director of operas

and concerts. Professional soloist with major choral groups and opera companies. 25 years with Opera-to Go of Young Audiences, Inc.

CAROLYN KINGSTON

Soprano

MM Indiana University



Ms. Kingston has sung opera roles and solo and duet recitals throughout the Northeastern U.S. She was on the Voice Faculty of New England Conservatory's Schools of Prep and Continuing Ed and the Powers Music School for nearly 30 years. She has a private

teaching studio in Belmont MA and offers Vocal Presence for Speakers in both educational and business settings.

PIANO

PAUL CARLSON

DMA, MM Boston University



Dr. Carlson performs for audiences across the Northeast. His teachers have included Tong-Il Han, Maria Clodes-Jaguaribe and Boris Berman. Dr. Carlson has taught at Gordon College, Boston University, and the Tanglewood Institute. He serves as President of the Chromatic Club of Boston, a 120-year-old club providing

performance opportunities to talented emerging musicians in Greater Boston.

ANDREW GOODRIDGE

MM, BM NEC



Mr. Goodridge performs extensively as an accompanist in the Boston area. Mr. Goodridge currently teaches piano at New England Conservatory and performs as a collaborative pianist. Also teaches music theory/history classes.

LINA YEN

BM Souchow University

Taiwan



Ms. Yen teaches piano at the Dedham Country Day School and was a Yamaha Music Instructor. She studied Delacroze at Longy School of Music and furthered education at New England

Conservatory. Two of her students won the 2002 Massachusetts state competition. She is accepting students of all ages.

RICK SCALISE

*MM, BM Performance/Composition
Boston University*



Mr. Scalise is the Accompanist/Music Director for *Mass Hysteria* and the *Lexington Pops Chorus*, an organist, and weekly classical piano soloist at various establishments. His solo work can be heard on cd. Rick

currently accepts both piano and guitar students.

MONALISA MAHTANI

M Ed BU, BA Wheaton



young children. Mona is known for her gentle and imaginative style.

Ms. Mahtani has taught music and movement in the Needham Public Schools and has offered private piano instruction for over ten years. She brings a broad perspective and creativity to piano instruction for

DEVIN LAWRENCE

BM Music Ed., U of Redlands



of the Young At Heart Singers in Lexington. Mr. Lawrence accepts students of all ages at the beginning and early intermediate levels.

Mr. Lawrence has taught instrumental and vocal music in CA and Illinois public schools, at all elementary and secondary levels. In addition, he has taught both private and class piano lessons and has directed many choirs. He is currently the director

ANDRE BAUMANN

MM NEC



Music Competition.

Mr. Baumann has performed extensively in the USA, Europe, Canada, and Venezuela. 2008 piano faculty member at Encore/CODA Music Camp teaching students 11-18. He is currently working on an MM at NEC in piano performance, studying with Vivian Hornik Weilerstein. Mr. Baumann was 2007 winner of the NEC Honors Chamber

SAXOPHONE

PAUL AHLSTRAND

BS Music Ed Syracuse U



Mr. Ahlstrand has performed at festivities and nightclubs throughout North America and Europe. He can be heard on recordings by Susan Tedeschi, Toni Lynn Washington, Ronnie Earl and many others. He also teaches at the Charles River School in Dover and the Middlesex School in

Concord.

VIOLIN

LUIS ANTONIO IBANEZ

MM Manhattan, BM U of So. ME



Mr. Ibanez performs with Boston Classical Orchestra, Boston Festival Orchestra, New Hampshire Symphony Orchestra, Pro Arte Chamber Orchestra, Vermont Symphony Orchestra, Portland Symphony Orchestra and "Duo Ibanez." He teaches at Brookline

Music School.

MARLA RUBINSON

MM, BM Boston University



Ms. Rubinson performs with chamber groups, Portland Symphony Orchestra and numerous other orchestras in the New England area. She studied with Peter Zazofsky, Bayla Keyes and Roger Shermont. She also

coaches for the Greater Boston Youth Symphony Orchestras, teaches at Noble & Greenough and maintains a private studio.

VIOLA / CHAMBER

J.J TANZER

MM BU, BM NEC

Ms. Tanzer performs with Boston Lyric Opera, Portland Symphony Orchestra, RI Philharmonic, Emmanuel Music and Pro Arte Chamber Orchestra. She studied with Steven Ansell and the Muir String Quartet at Boston University. She coaches viola and chamber music for the Greater Boston Youth Symphony Orchestras.



CELLO

CAMERON SAWZIN

MM NEC, BM Oberlin



Ms Sawzin 's Boston engagements range from a season finale Boston Lyric Opera production of "Marriage of Figaro" and Masterworks Chorale to Broadway shows "The Producers and Sweet Charity". She was soloist in the New Directions Cello Festival. She has

been teaching at the Collins Center for the Performing Arts for 20 years (Andover).

SHAY RUDOLPH



As a Boston-area freelance cellist, Ms. Rudolph has performed with the Indian Hill Symphony, the Cantata Singers & Ensemble, the Springfield Symphony, the Back Bay Players, and the Copley Chamber Players. She has also played with the Cleveland Orchestra, the Henry Mancini Institute Orchestra in Los

Angeles, and various groups in Sweden, Finland and Spain.

PRE-INSTRUMENTAL

MARILYN ABEL

M Ed Lesley College



Ms. Abel taught Music enrichment classes for Lexington nursery schools and is the founder and co-director of the Special Needs Arts Fund. She is also a therapeutic music teacher working with special needs individuals and groups. Her performance experience includes both voice and piano. Ms. Abel offers **Musical Mondays**, a relaxed

and enjoyable introduction to music for 2 to 6 year olds. Songs, rhythm instruments, creative movement, puppets and games are used as a means of teaching basic musical concepts which provide a rudimentary foundation for further musical training.

Jason Davis: guitar/bass

Pam Marshall: French horn and composition/improvisation

Julia Harden: piano

For all lesson inquiries contact the Lexington Music School directly: 781-863-8484 or lexingtonmusic@gmail.com.

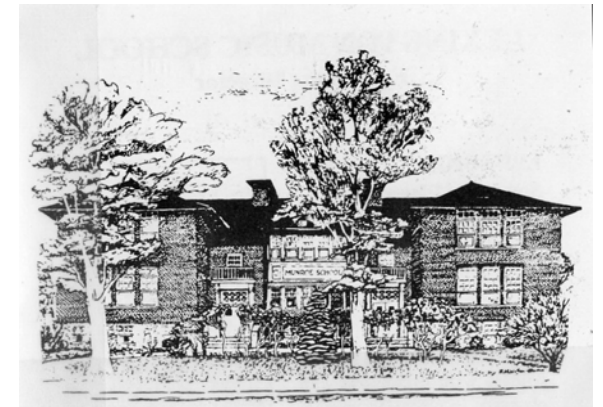
LEXINGTON MUSIC SCHOOL

a musicians' collaborative

at the
Munroe Center for the Arts
1403 Massachusetts Avenue
Lexington, MA 02420

lexingtonmusic@gmail.com

781-863-8484



The **Lexington Music School**, founded by Epp Sonin in 1985, offers music instruction for students at various levels. Lessons and workshops are given by highly qualified and dedicated teachers. Each faculty member of Lexington Music School coordinates his/her own class of students including setting times and fees. The Lexington Music School, as part of its mission, awards some scholarships and is involved in many community outreach services and programs including internships, benefit concerts and community workshops.

www.lexingtonmusicschool.com